

# OXFORD LAB PRODUCTS

## BenchMate® Laboratory Shakers



Available at

**Pipette.com**

info@pipette.com • 800-243-3232

Oxford Lab Products  
**BenchMate® Digital Orbital Shaker**  
 Features and Benefits

**Program the Shaker for Quicker Use**

You can pre-program:

- Motion direction (clockwise or counterclockwise)
- Speed
- Run time from 1 minute to 99.59 hours
- Dwell time and sequence

**Pulse Function for Vigorous Mixing**

Set the orbital shaker to alternate between a clockwise and counterclockwise motion

**Designed with Documentation in Mind**

Large LED display simultaneously shows speed, time, and program



**Utilize Almost All Vessel Shapes and Sizes**

Multiple attachments and platforms are available to fit your applications

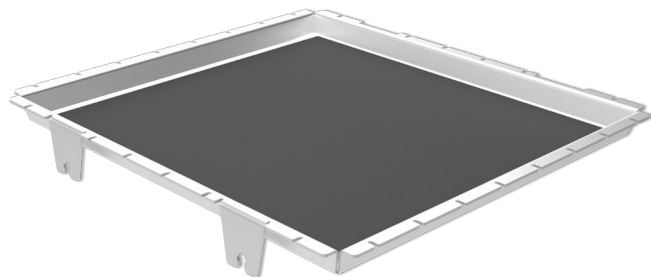
**Lifetime Warranty\***

Durable equipment built to last

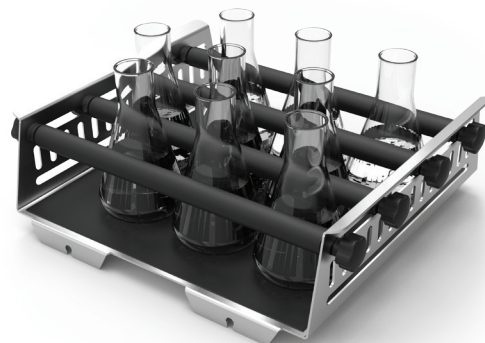
Product Specifications		
Catalog Number	OS-10+	OS-20+
Description	BenchMate® 10 mm Orbital Shaker with Stainless Steel Slip Resistant Tray	BenchMate® 20 mm Orbital Shaker with Stainless Steel Slip Resistant Tray
Orbital/Linear Motion	10 mm Diameter	20 mm Diameter
Variable Speed	50 rpm to 500 rpm	50 rpm to 300 rpm
Motor Type	Brushless DC (BLDC) Motor	Brushless DC (BLDC) Motor
Run Time	1 Minute to 99.59 Hours	1 Minute to 99.59 Hours
Programmable	Yes; Save up to 6 Programs with 9 Sub-programs	Yes; Save up to 6 Programs with 9 Sub-programs
Max. Allowable Weight	7.5 kg/16.5 lbs (Including Attachment)	7.5 kg/16.5 lbs (Including Attachment)
Platform Size (L x W)	330 mm x 330 mm	330 mm x 330 mm
Dimensions (L x W x H)	350 mm x 408 mm x 105 mm	350 mm x 408 mm x 105 mm
RS-232 Interface	Optional	Optional

\*Lifetime warranty only available in the Continental USA

Oxford Lab Products  
**BenchMate® Orbital Shaker Attachments**  
Attachment Overview



**Stainless Steel Base Plate**  
with Slip Resistant Tray  
(Cat. No. OS-SBP; Included)



**Universal Platform with Adjustable Bars**  
Flask Capacity of 13 x 100 mL, 13 x 150 mL,  
9 x 250 mL, 6 x 500 mL, or 5 x 1000 mL  
(Cat. No. OS-UA)



**Funnel Attachment Platform**  
(Cat. No. OS-FA)



**Stainless Steel Platform for Stainless Steel Clamps**  
OS-SBP250: Flask Capacity of 9 x 100 mL, 150 mL, or 250 mL Flasks  
OS-SBP1000: Flask Capacity of 9 x 500 mL or 5 x 1000 mL Flasks  
Clamps Sold Separately



**Plastic Flask Clamps**  
250 mL Flask Clamp: OS-PC250  
500 mL Flask Clamp: OS-PC500



**Stainless Steel Flask Clamps**  
100 mL Flask Clamp: OS-SC100  
250 mL Flask Clamp: OS-SC250  
500 mL Flask Clamp: OS-SC500  
1000 mL Flask Clamp: OS-SC1000



**Plastic Platform for Plastic Clamps**  
Flask Capacity of 9 x 250 mL or 9 x 500 mL,  
Clamps Sold Separately  
(Cat. No. OS-PBP)

# Oxford Lab Products

## BenchMate® Digital Plate Shaker

### Features and Benefits

#### Consistent Temperature

No temperature “hotspots” with compartmentalized brushless DC motor

#### Designed for Documentation

Digitally adjust speed from 200 rpm to 1200 rpm

#### Robust Mixing Option

Continuous and pulse functions for vigorous mixing

#### Supported Base

Ensures constant speed across the entire shaking platform

#### Programmable

Program speed, run time, and pulse mode

#### Lifetime Warranty\*

Durable equipment built to last



#### Product Specifications

Catalog Number	S4P-D
Description	BenchMate® Digital Four Plate Shaker with 3 mm Orbital Motion, 200 to 1200 rpm Speed Range
Orbital Diameter	3 mm
Variable Speed	200 rpm to 1200 rpm, in 10 rpm Increments
Plate Capacity	4 Standard SBS Footprint Microtiter Plates
Pulse Mode	Yes (Clockwise and Counterclockwise Motions)
Timer	1 Minute to 999 Minutes and Infinite Mode
Motor Type	Brushless DC (BLDC) Motor
Programmable	Yes
Max. Weight Capacity	2 Kg/4.4 lbs
Dimensions (L x W x H)	343 x 195 x 88 mm
Protection Class	IP 20

\*Lifetime warranty only available in the Continental USA